

Lesson 1

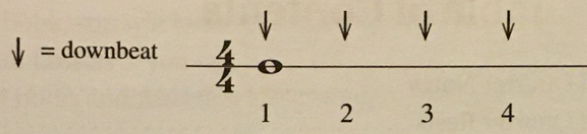
Whole, Half, and Quarter Notes

$\frac{4}{4}$ Time

The lessons in this book begin in $\frac{4}{4}$ time. There are four beats per measure in $\frac{4}{4}$ time, and the quarter note receives one beat. $\frac{4}{4}$ time is sometimes referred to as common time. $\frac{4}{4}$ or common time is indicated by two time signatures, $\frac{4}{4}$ or C.

Whole Note

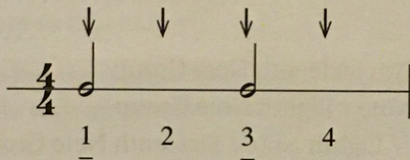
The whole note receives four beats in $\frac{4}{4}$ time. The whole note's attack begins on beat one and its sound continues through beat four.



Note: In this book, underlined counts represent the attack or entry point of each note.

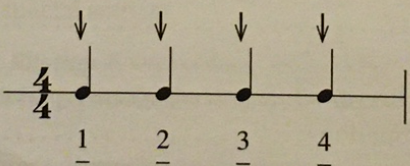
Half Note

The half note receives two beats in $\frac{4}{4}$ time. When there are two half notes in a measure, the first half note's attack begins on beat one and its sound continues through beat two. The second half note's attack begins on beat three and its sound continues through beat four.

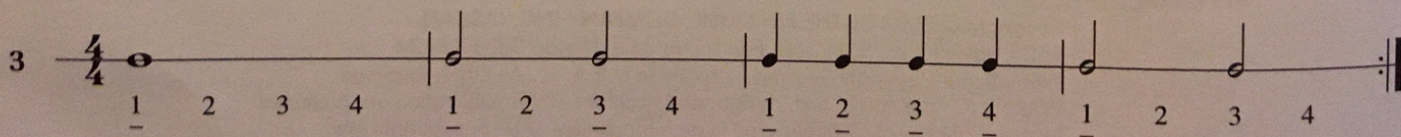
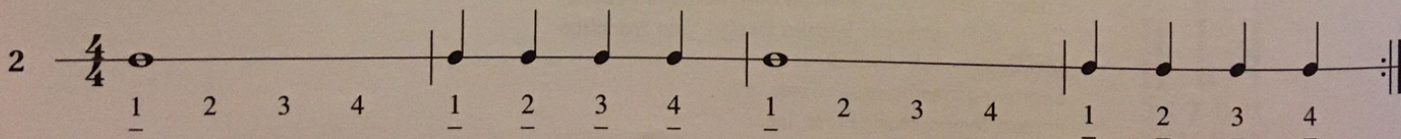
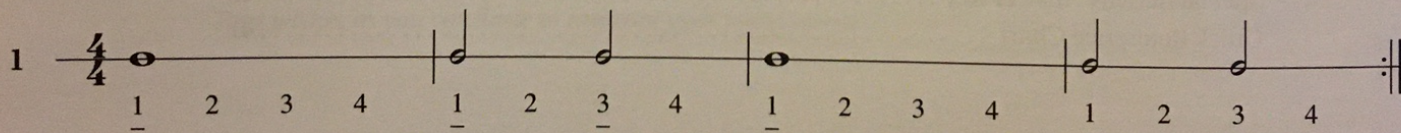


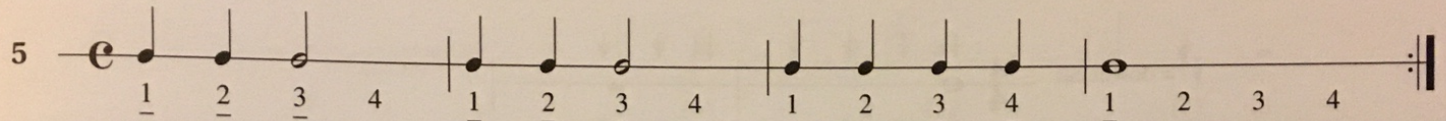
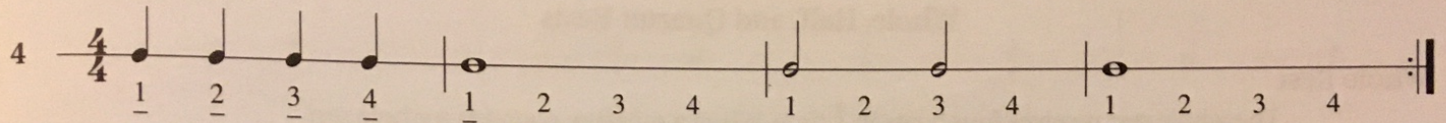
Quarter Note

The quarter note receives one beat in $\frac{4}{4}$ time. When there are four quarter notes in a measure, each beat is played.

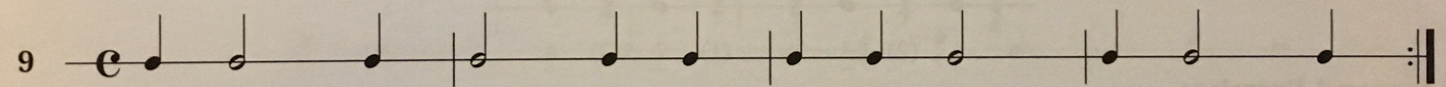
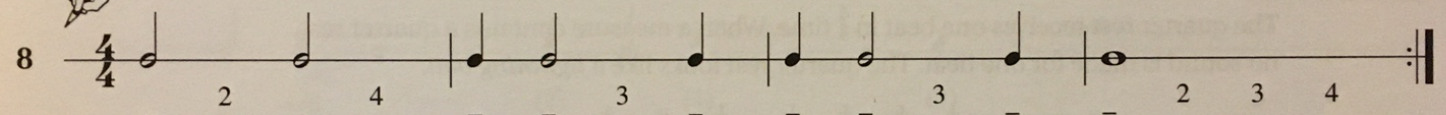
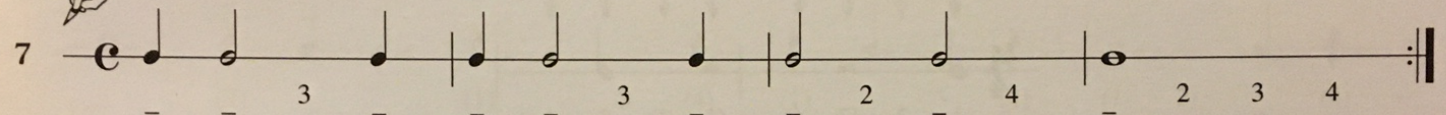
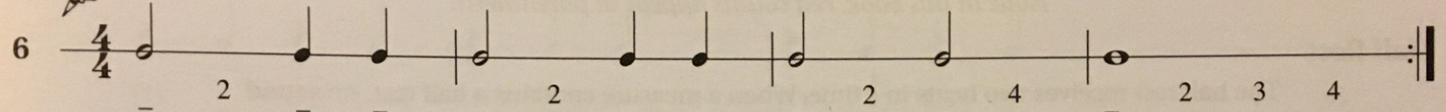


Lesson 1 Exercises

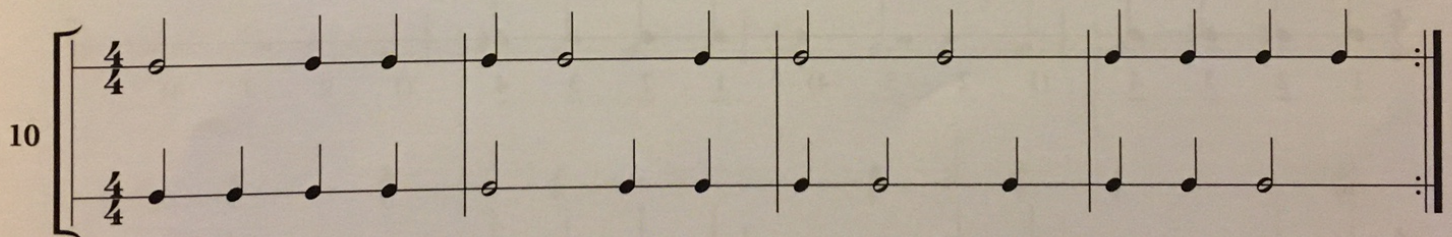




Note: In this book, the pencil icon reminds you to write in the counts on the lines provided.



Duet



MYSTERY RHYTHM

The following rhythm is from a familiar folk song about a girl and her pet. Play the rhythm and see if you can identify the melody. Once you solve the mystery, choose a starting pitch and try to play the melody by ear.

