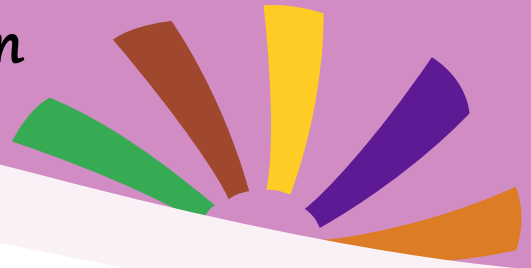


# Gid Resous Sante Mantal Space Lan



Anplwaye Space Program lan ap kontinye bay sipò a elèv nou yo ak fanmi yo pandan tan ensèten sa a. Pandan ke nou pa nan biwo andan lekòl la nou ap toujou disponib; pa telefòn ak imèl. Nou ap fè kontak chak semèn ak elèv Space Program nou yo.

## Ou pa pou kont ou pandan tan sa!

Pou jwenn asistans imedya ak yon kriz sante mantal  
Kontakte 911 oswa ale nan lopital ki pi pre w la:

East Orange General Hospital: 300 Central Ave. East Orange, NJ

Mountainside Hospital: 1 Bay Ave. Montclair, NJ

Clara Maass Medical Center: 1 Clara Maas Dr. Belleville, NJ

Newark Beth Israel Medical Center: 201 Lyons Ave. Newark, NJ



The Trevor Project focuses on ending suicide among LGBTQ youth. If you or someone you know needs help, we are here for you.

	<b>TrevorLifeline</b> If you're thinking about suicide, you deserve immediate help. Call us anytime. 866.488.7386
	<b>TrevorText</b> Talk to a Trevor counselor via text message. Text "START" to 678678
	<b>TrevorChat</b> Online instant messaging with a TrevorChat counselor. TrevorChat.org
	<b>TrevorSpace</b> A social networking site for LGBTQ youth under 25, and their friends & allies. TrevorSpace.org
	<b>Suicide Prevention &amp; General Info</b> Information on suicide prevention and FAQs on sexual orientation, gender identity and other topics can be found at: TheTrevorProject.org/resources

TheTrevorProject.org

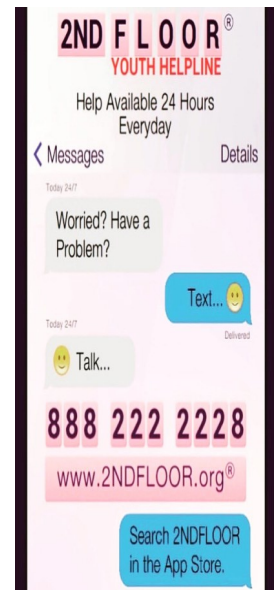
Pwojè Trevor la konsantre sou fini swisid nan mitan jèn LGBTQ. Si ou menm oswa yon moun ou konnen



855-NJHopeline  
(855-654-6735)  
www.njhopeline.com



Si ou menm oswa yon moun ou konnen ap panse sou swisid, rele numero prevansyon nasyonal pou Swisid



Se yon sit entènèt ak doktè revize konsèy sou dè santèn de sijè fizik, emosyonèl ak



**I'm not ok.**

**I'm here, and I'm listening.**

CRISIS TEXT LINE | Text HELLO to 741741.

POU KONEKTE AK YON ANPLWAYE SPACE PROGRAM L'AN  
POU PATAJE ENKWETID OU OSWA POU MANDE KONSÈY POU  
BEZWEN SANTE MANTAL OU KI PA IJAN :

(Available 9:30am - 5:30pm Mon - Fri)  
Remind.com class code: @be73ake

**JOY SIMEON, PROGRAM MANAGER**  
973.666.0329 — jsimeon@familyconnections.nj.org  
**ASSATA BARNES, YOUTH EMPLOYMENT SPECIALIST**  
443-805-6140 — abarnes@familyconnections.nj.org  
**DAVID ORTEGA, YOUTH DEVELOPMENT SPECIALIST**  
862-414-8553 — dortega@familyconnections.nj.org