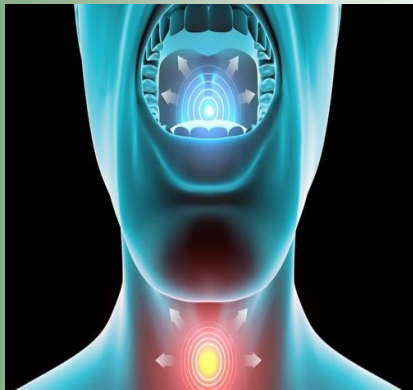


# CORONAVIRUS, COLD, FLU OR ALLERGIES?

## CORONAVIRUS

- ◆ FEVER
- ◆ DRY COUGH
- ◆ NOTICEABLE SHORTNESS OF BREATH
- ◆ SYMPTOMS APPEAR 2-14 DAYS AFTER EXPOSURE

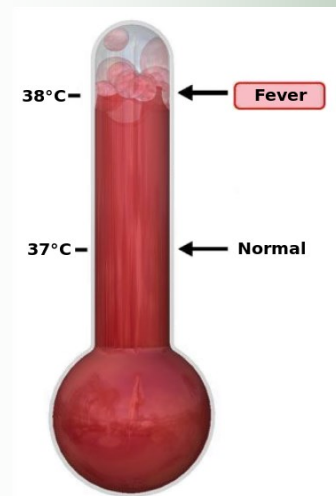


## COLD

- ◆ SORE OR SCRATCHY THROAT
- ◆ COUGH
- ◆ RUNNY NOSE
- ◆ STUFFY NOSE
- ◆ MILD FEVER, IF ANY

## FLU

- ◆ FEVER (OVER 100.4)
- ◆ EXTREME EXHAUSTION
- ◆ SORE THROAT
- ◆ MUSCLE OR BODY ACHES
- ◆ DRY COUGH
- ◆ CHILLS AND SWEATS
- ◆ STUFFY NOSE
- ◆ HEADACHES
- ◆ POSSIBLE VOMITING OR DIARRHEA



## ALLERGIES

- ◆ SNEEZING
- ◆ ITCHY, RUNNY OR BLOCKED NOSE
- ◆ ITCHY, RED WATERY EYES
- ◆ WHEEZING, CHEST TIGHTNESS, SHORTNESS OF BREATH, COUGH