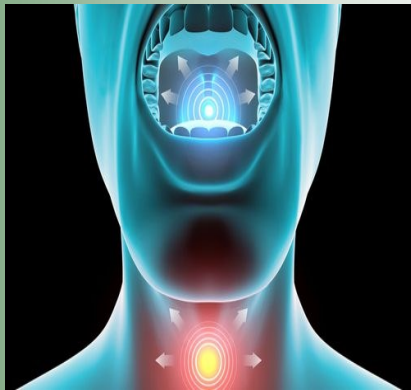


CORONAVIRUS, COLD, FLU OR ALLERGIES?

KORONAVIRIS

- ◆ LAFYÈV
- ◆ TOUS SÈK
- ◆ SOUF KOUPE KI VIZIB
- ◆ SENTÒM YO PARÈT 2-14 JOU APRE EKSPÖZSYON

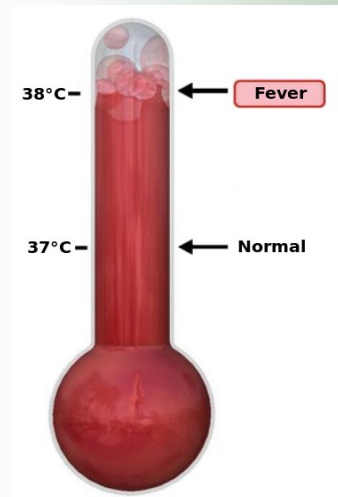


KÒLD/FREDI

- ◆ GÒJ FÈ MAL OSWA GÒJ GRATE
- ◆ TOUS
- ◆ NEN K'AP KOULE
- ◆ NEN BOUCHE
- ◆ TI LAFYÈV, SI GENYEN

FLOU

- ◆ LAFYÈV (KI DEPASE 100.4)
- ◆ EKSPÖZISYON EKSTRÈM
- ◆ GÒJ FÈ MAL
- ◆ DOULÈ NAN MIS OSWA NAN KÒ W
- ◆ TOUS SÈK
- ◆ FRISON AK TRANSPIRASYON
- ◆ NEN BOUCHE
- ◆ TÈT FÈ MAL
- ◆ VOMISMAN POSIB OSWA DYARE



ALÈJI

- ◆ ETÈNYE
- ◆ NEN GRATE, KOULE OSWA BOUCHE
- ◆ JE GRATE, JE WOUJ OSWA JE DLO
- ◆ RÈL NAN LESTOMAK, BLOKAJ NAN PWATRIN, SOUF KOUPE, TOUS