

Reopening  
Schools



# Return to School Plan: A Collaborative Conversation

GERALD FITZHUGH, II, ED.D.

SUPERINTENDENT OF SCHOOLS

JULY 9, 2020



*“It is very important to have stakeholder input as it relates to the creation of the reopening of schools plan. Working in tandem will ensure that all students and staff are safe.”*

---

DR. FITZHUGH

SUPERINTENDENT OF SCHOOLS



# Virtual Committee Participation Outline

---

- Dr. Fitzhugh will serve as the host. Dr. Powell is the co-host and co-moderator...
- Questions during the presentation are to be placed into the chat, Dr. Powell and I will read them and respond accordingly.
- All participants will be muted to ensure no background noise or miscommunication. If there is a clarifying question due to the number of participants, we will need all communication to be placed inside the chat.
- This is a brainstorming session. Your voice is important. Please be patient regarding the finalization of the plan as it must be unveiled 4 Weeks before the Start of the First Day of School. The first day of school is September 8, 2020.
- Please respect the questions and comments from one another; this is a team effort to ensure the health and safety of students and staff.
- This session along with all others will be recorded and placed on the district website.



# Agenda for the Session

Led by: Dr. Gerald Fitzhugh, II &  
Dr. Tina Powell

---

## Agenda Items

1. Call to Order and Thank you to All Participants
2. Guidelines for the Session
3. Purpose of the Reopening of Schools Committee
4. The Committees' Work and Aligning the District's Mission/Vision
5. Discussion about the Reopening of Schools and Potential Options-Remember, decisions will not be made today. We are brainstorming steps in the process
6. Reminders about COVID-19 Symptomology
7. Upcoming Survey for Staff, Students, and Parents
8. Lessons Learned from Distance Learning from March 17<sup>th</sup> through June 24<sup>th</sup>
9. Next Steps and Adjournment

# Purpose of the Reopening of Schools Committee

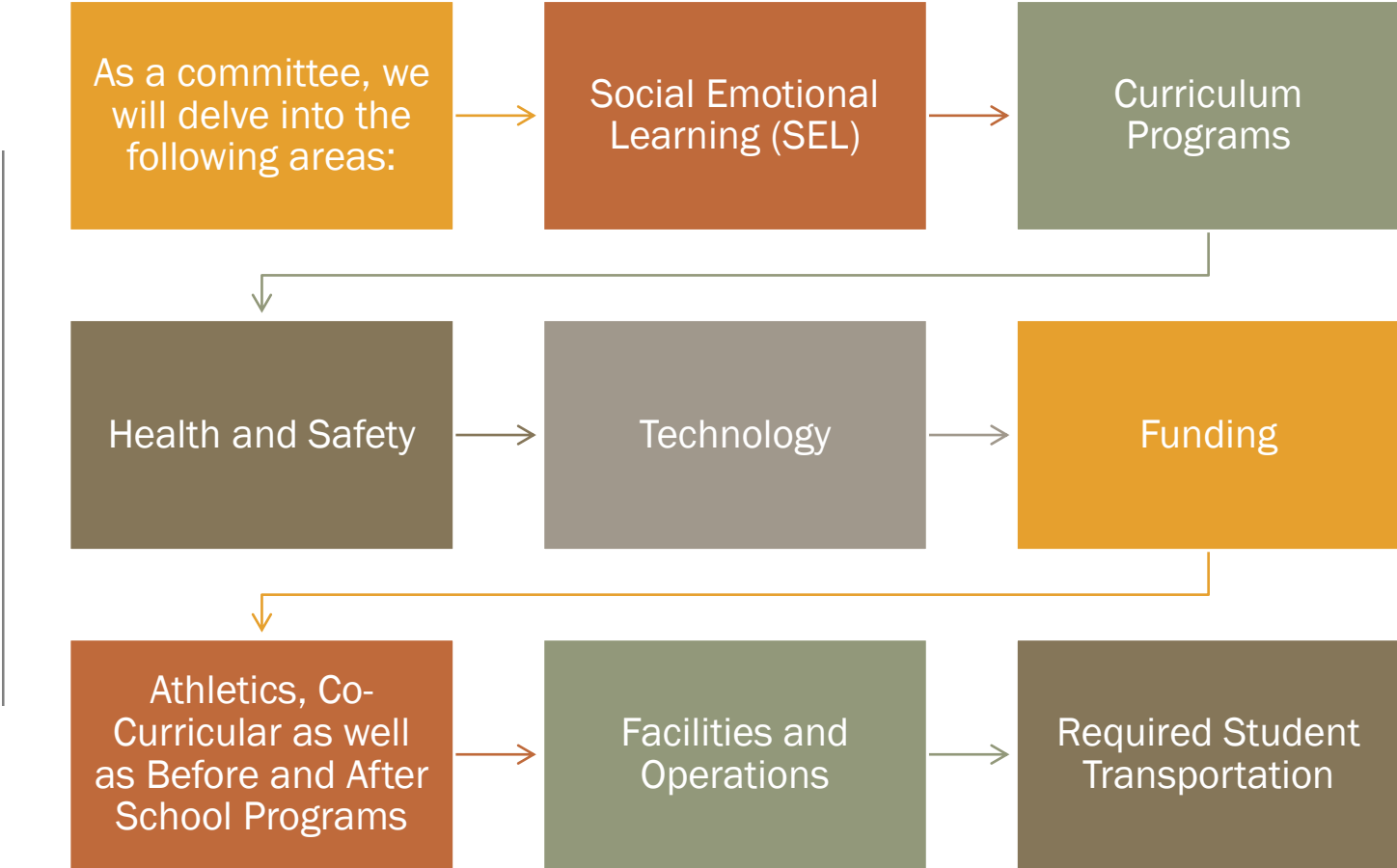
---

On Friday, June 26, 2020, Governor Murphy announced that school will reopen in September, keeping in mind health precautions to ensure the safety of all students and staff. With that being said, the Reopening of Schools Plan will incorporate the voices of staff, Board of Education Members, health officials, and families. These representatives will evaluate the state guidelines and requirements released by Governor Murphy in order to provide input and recommendations into the district's reopening plan. As stated by Governor Murphy, "there is no one-size fits all approach to suit the unique challenges faced by each school district across the state."

- Per the Road Back Document released by the New Jersey Department of Education, there are 4 key areas for discussion:
- 1. Conditions for Learning 2. Leadership and Planning 3. Policy and Funding 4. Continuity of Learning



# The Committee's Work





# Committee's Stakeholders

---

- District and school-level administrators
- Board of Education Members
- Presidents/designees of local associations (Orange Education Association as well as Orange Administrators and Supervisors Association-District Unions)
- Content experts
- Educators
- Parents
- Students



# Stakeholders' Voices

---

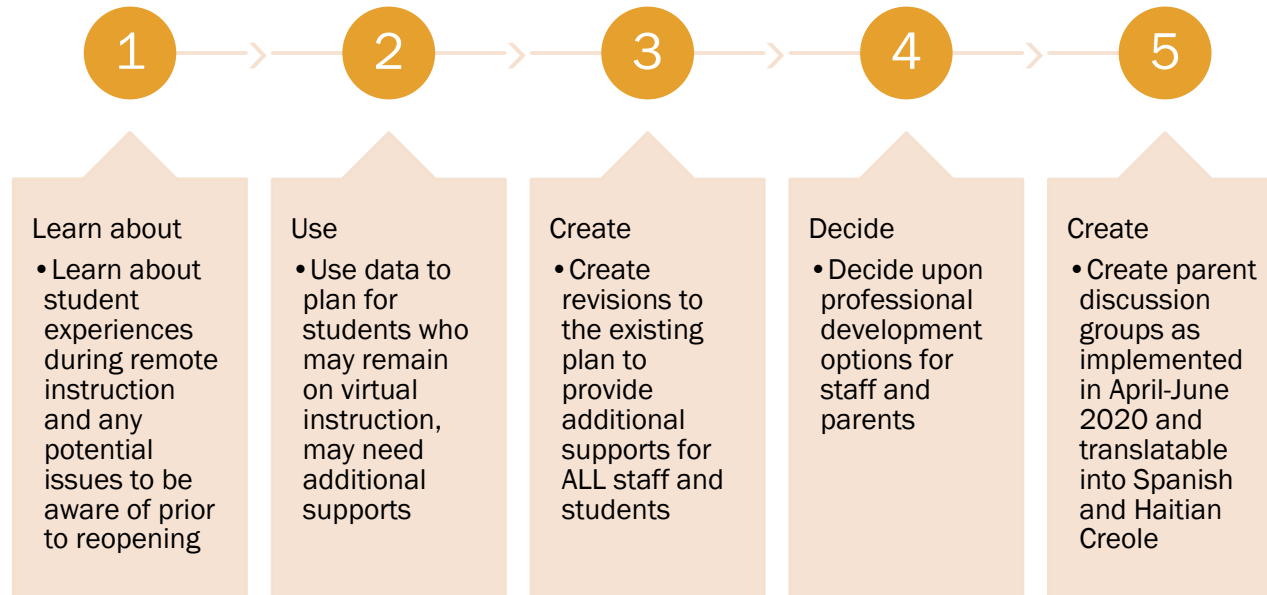
- As described regarding strategic plans, the following outlines the benefits when creating a sound plan:
- It allows organizations to be proactive rather than reactive.....
- It sets up a sense of direction.....
- It increases operational efficiency.....
- It helps to increase stakeholder input...





# Survey Regarding Distance Learning Capturing March 17<sup>th</sup> through June 24<sup>th</sup>

---



# Vision and Mission of Our Return to School Plan

---

**Vision:** Quality Learning and Superior Performance for All (including the Health and Safety of all Staff and Students)

**Mission:** We prepare and inspire all learners to lead and succeed in a safe and healthy environment

**Beliefs:**

Trust among all stakeholders is vital.

Expectations influence accomplishments because everyone has the capacity to learn.

A school-community partnership is essential.

Change creates opportunity.

High-performing leadership makes visions reality.



# Considerations for Change: Let's Think This Through

---

- Will this change encourage social distancing?
- Will this change discourage student cohort mixing like those that occur for lunch periods, recess or assemblies?
- Will this change encourage and improve hygiene practices?
- How will this impact the mental health and wellness of students, staff and the school community?

# Considerations: Instructional Time

---

- Instruction must occur 180 instructional days (as defined by the district calendar and can be in person or virtual)
- School day consists of not less than 4 hours for Grades 1-12, not less than 2.5 hours for kindergarten.
- “Hours of instructional time are not defined as a student’s time in front of a teacher or in front of a screen, but time engaged in standards-based learning under the guidance and direction of a teacher.”



# Considerations: Instructional Delivery and Formats

---

- There are a range of options for remote instruction, both synchronous and asynchronous
- Could be Fully In-Person....Is this feasible?
- Hybrid Approach – Daily – Every other - Weekly – Other
- Could prioritize some students for more In-Person instruction (Think of our Sub-Groups: ELL, Special Education)
- Needs of at-risk students
- Striving for Equity
- Could have other students still on complete remote instruction (e.g., parents fearful and won't allow to return)
- Effective use of all educational services personnel



# Considerations: Standards for Health & Safety

---

- Masks are required wherever social distancing cannot be accomplished
- Access to PPE (Personal Protective Equipment), hand sanitizer, partitions (if applicable) etc.
- Potential staffing shortages
- Daily Cleaning/sanitizing demands
- Educational Effectiveness while Social Distancing
- Contingency plan for re-closure
- Accommodating “At-Risk” students and staff



# Considerations: Logistics

---

- Transportation
- Arrival and Screening
- Traffic Flow within building
- Classroom Design
- Recess/Physical Education
- Meals/Lunch
- Athletics and After School Functions
- Dismissal





# Transportation Layout

---

- Anticipated Minimum Standards – All students able to do so must wear a face covering if unable to maintain social distancing or put physical barriers between rows on bus
- CDC recommends social distancing of 6 feet or physical barriers between rows (54 student bus would go down to 11 students or 22 with barriers)
- Adopt best practices for cleaning and disinfecting buses (this will be a discussion as well with our transportation partner; Sussex Transportation)



# School Level Entry and Movement

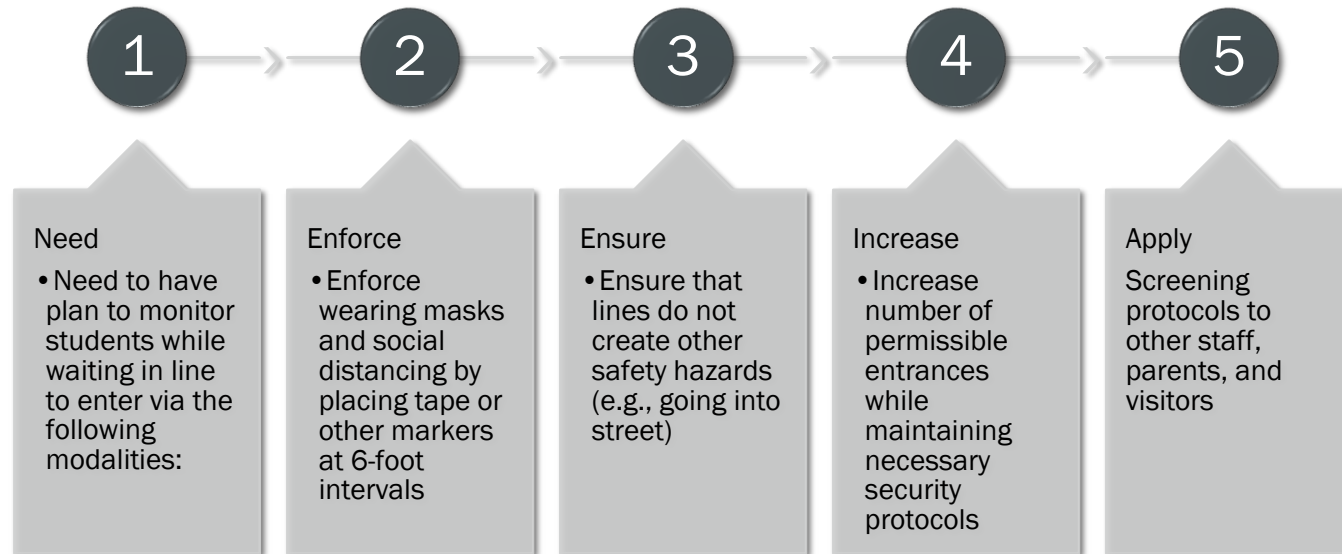
---

Create	Student screening procedures will create backlog of students entering building
Consider	Consider broader criteria for inclement weather given potential hazards of students while waiting to enter
Consider	Consider staggering start time of schedules to reduce backlog



# School Level Entry and Movement

---



# Classroom Configuration

---

- Social distancing to maximum extent practical
- Requires 113 net square feet (NSF) per child, but based on spacing more likely to need 144 NSF
- If unable to socially distance, could do barriers between desks and/or have students all facing in one direction
- If no social distancing or physical barriers, need to require face covering during class
- Limit sharing of items or clean between use



# Athletics and the Return to Sports

---

- NJSIAA Return to Play Phase I Guidelines released June 19
- Phase I covers July 13 – 26
- Establishes pre-conditions to be met (in terms of medical clearance and social distancing)
- COVID-19 Questionnaire to be completed 7 days prior to start of first workout session
- Medical clearance for those who were COVID-19 positive or with underlying medical conditions



# Other Considerations where More Guidance is Needed

---

- No guidance of yet on relaxing instructional “minimums”
- No guidance yet on the inability of staff returning to work
- No guidance yet on the 20-minute stipulation for recess
- No guidance yet on another waiver for state testing for the upcoming year
- No guidance yet on enforcing pre-school students to wear masks throughout the school day
- While there hasn't been any direct guidance, mandatory safety drills have not gone away.



# Training Supports for All Stakeholders: Health and Safety

---

- Hygiene protocols – Handwashing / sanitizing throughout day
- Cleaning and disinfecting protocols – Between classes, equipment touched in recess periods, after sharing of items within closed cohort, other commonly touched items
- Controlling flow of traffic in building
- Not coming to school with any symptoms





# Symptoms of COVID-19

---

Symptoms may appear 2 -14 days after exposure to the virus.  
People with these symptoms may have COVID-19:

- Fever or chills
- Cough
- Shortness of breath or difficulty breathing
- Fatigue
- Muscle or body aches



# Additional Symptoms of COVID-19

---

- Headache
- New loss of taste or smell
- Sore throat
- Congestion or runny nose
- Nausea or vomiting
- Diarrhea



# Our Support to Staff, Students, and Families

---

- We will continue to update staff, students, and families during this period.
- Building level meetings will take place after the plan is crafted inputting the voices of stakeholders
- The Orange Return to School Plan will be translated in Spanish and Haitian Creole



# Next Roundtable Meetings

---

- July 15, we will host a Spanish Speaking ONLY Roundtable Meeting to support our Spanish speaking families at 5:00 PM
- July 16, we will host a Haitian Creole Speaking ONLY Roundtable Meeting to support our Haitian Creole speaking families at 5:00 PM
- We will continue to have discussions about planning....



# Thank You Stakeholders!

---

On behalf of the Orange Township Board of Education, Administration, Faculty, and Staff, we thank you for your contribution today. As shared earlier in the presentation, your input is valuable and necessary as we craft this strategic plan for the return to school in September 2020 whether it be in person or a myriad of in person and virtual. Always know, that the health and safety of all that enter our doors is paramount to each of us. -Dr. Fitzhugh-

